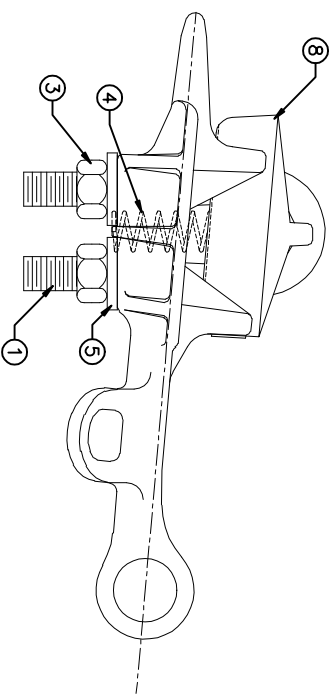
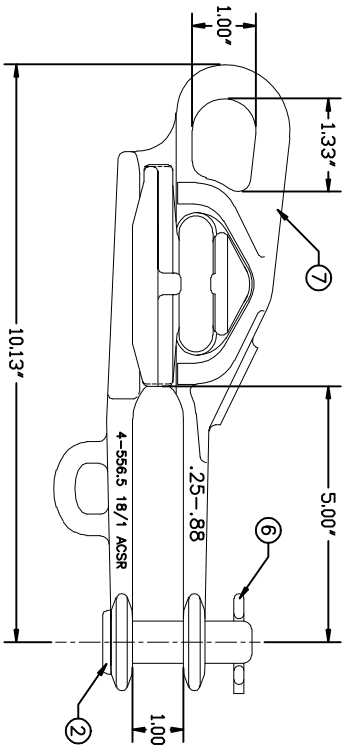
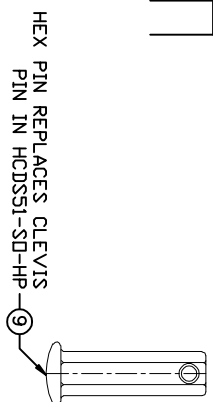


REVISIONS			
NO.	DATE	DESCRIPTION	BY / CNO
1	7/10/12	ADDED HCDS88-SO-HP	JM



ITEM NO.	PART NO.	CAT. NO.	DESCRIPTION	QUANTITY			
				A	B	C	D
1	P56020	H-0201-23	1/2" U-BOLT	1	1		
2	P56094	H-0315-03	5/8" ϕ x 2-1/16" CLEVIS PIN	1	-		
3	P56138	H-0400-04-W	1/2"-13 HEX NUT FIN	2	2		
4	P56226	H-0470-02	COMPRESSION SPRING	1	1		
5	P56294	H-0500-04	1/2" FLATWASHER	2	2		
6	P61134	M-111-3	LONG COTTER PIN	1	1		
7	P63256	*HCDS88B	HCDS88 BODY	1	1		
8	P63257	*HCDS88K	HCDS88 KEEPER	1	1		
9	P61654	H-0320-03	5/8" ϕ x 2-1/8" HEX CLEVIS PIN	-	1		

ASSEMBLY NUMBER	REF. NO.
HCDS88SO	A
HCDS88SOHP	B
	C
	D

- NOTES:
1. MATERIAL - BODY AND KEEPER: A356-T6 ALUMINUM ALLOY
HARDWARE: STEEL, HOT DIP GALVANIZED PER ASTM-A153
COTTER PIN AND COMP. SPRING: STAINLESS STEEL
 2. ULTIMATE STRENGTH - BODY: 10,000 LBS.
EYE: 6,000 LBS.
 3. CLAMPING RANGE - 0.25" TO 0.88"



DEAD END SIDE OPENING CLAMP
HCDS88SO & HCDS88SOHP

This information is confidential and is the property of Maclean Power Systems. It may not be made public or reproduced except that the Customer may make copies for use solely in installation, maintenance, and operation of products supplied by Maclean Power Systems.

ENG. REF.

DATE 12/6/2011	SCALE	NO.	REV.	SH. 1
DATE 12/6/2011	SCALE	NO.	REV.	SH. 1
DATE 12/6/2011	SCALE	NO.	REV.	SH. 1
DATE 12/6/2011	SCALE	NO.	REV.	SH. 1

BC8557-1