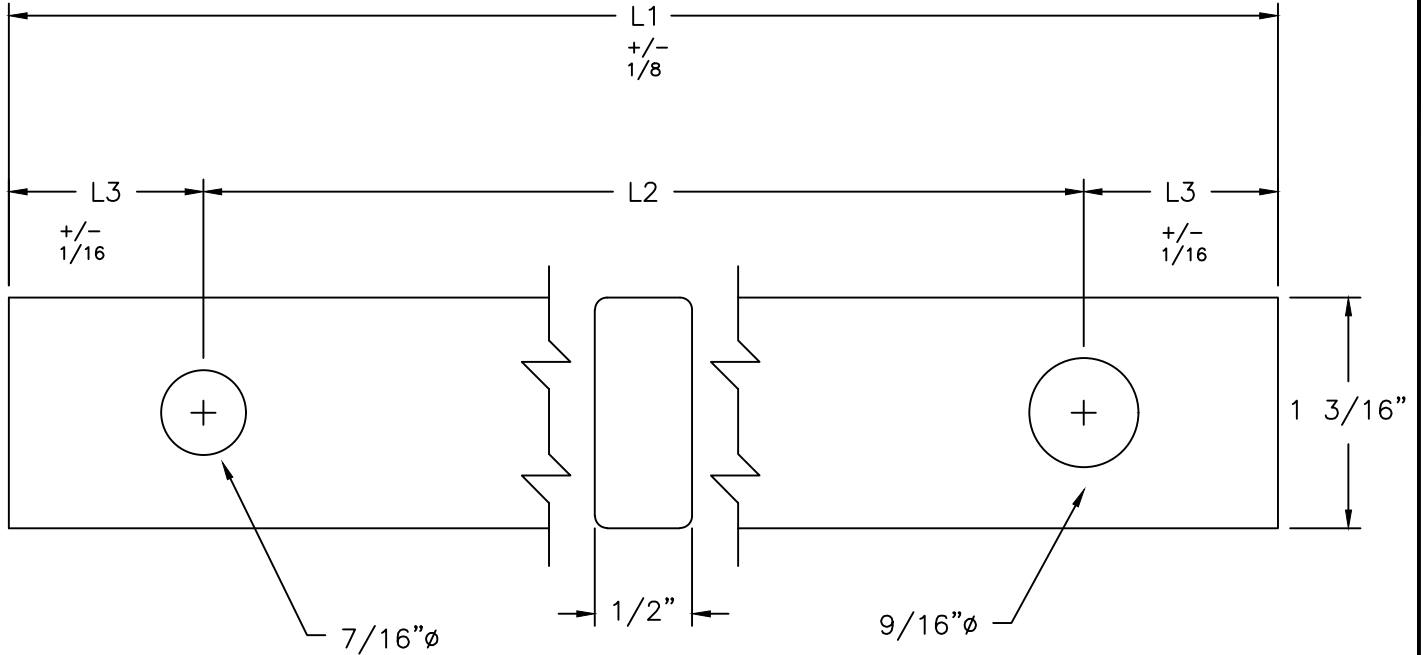


CATALOG NUMBER	LENGTHS (IN)		
	L1	L2	L3
CRB-29	29	26	1.50
CRB-31	31	28	1.50



**NOTES:**

1. MATERIAL - POLYESTER FIBERGLASS
2. FINISH - VEIL COATING
3. EDGES TO HAVE 1/16"R.

**PROPRIETARY**

This information is confidential and is the property of Maclean Power Systems. It may not be made public or reproduced except that the customer may make copies for use solely in the installation, maintenance, and operation of products supplied by Maclean power systems.



**MacLean Power Systems**

**Continental Electric**

PO Box 835, Trussville, AL 35173  
Phone: (205)655-7400 Fax: (205)655-3530



DRAWN BY: MAW	APPROVED BY:	SCALE: N.T.S.
	CHECKED BY:	

**FIBERGLASS CROSSARM BRACE**

CATALOG NUMBER: CRB-L1

NO.	DATE	DESCRIPTION	BY
4	7/20/20	REMOVED CRB28 - OBSOLETE	MBG
3	1/27/17	ADDED CRB-31, MADE DRAWING FOR ALL SIZES CRB-28: L1 USED TO BE 28", L3 USED TO BE 1.0"	MBG
2	2/11/04	Added Hole Location Tolerance	MW
1	9/16/99	REDRAWN IN AUTOCAD	MW

DATE: 9/16/99	DRAWING NO: CEA-1536	SH: OF:	R/4
------------------	-------------------------	------------	-----