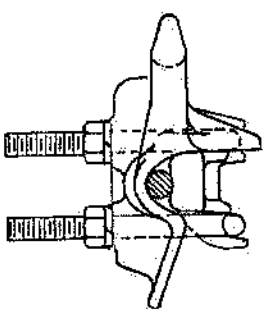
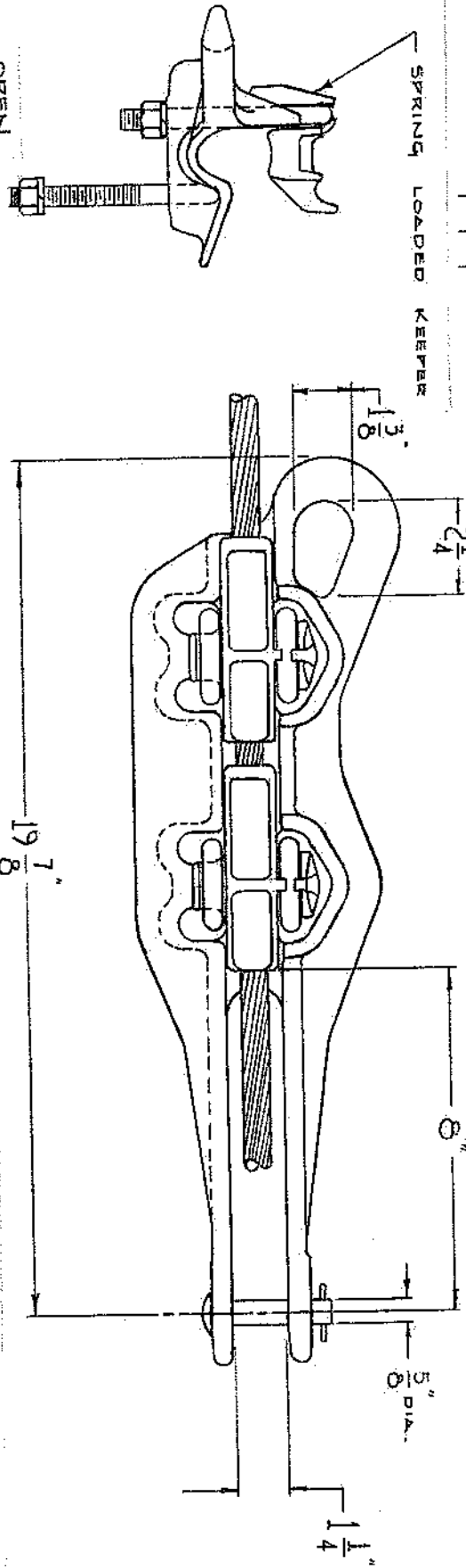
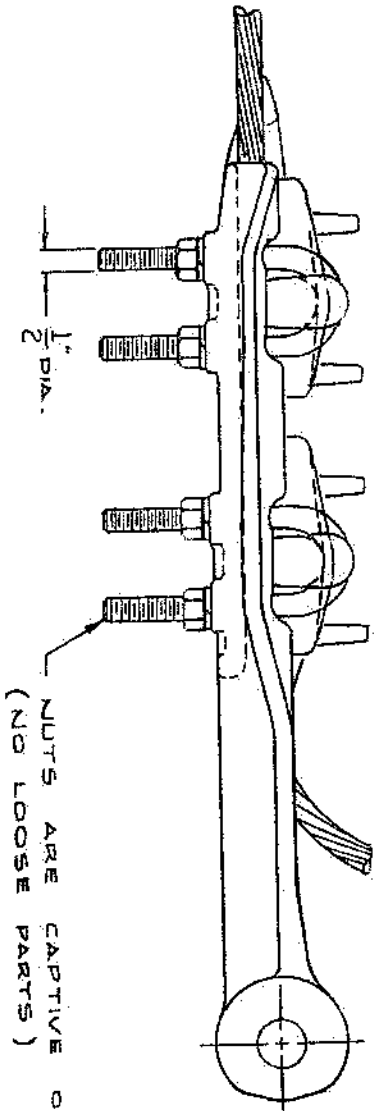


REVISIONS			
NO.	DATE	DESCRIPTION	BY / QKD



CLOSED



- NOTES:
1. MATERIAL - BODY & KEEPER; ALUMINUM ALLOY A356-T6. HARDWARE; HOT DIP GALV. PER ASTM A-153
 2. CONDUCTOR RANGE - .68" DIA MIN.; 336.4 MCM (18/1) 1.16" DIA. MAX.; 954 MCM (45/7)
 3. ULTIMATE STRENGTH - 27,000 LBS BODY, 16,000 LBS EYE.

ENG. REF. _____

This information is confidential and is the property of Maclean Power Systems. It may not be made public or reproduced in any form without the written permission of Maclean Power Systems. Customers may make copies for their own use only. Maclean Power Systems and operation of products supplied by Maclean Power Systems.

MACLEAN POWER SYSTEMS
A Maclean-Logg Company

HD50116-2
HOT LINE DEAD-END
SIDE OPENING CLAMP

Doc# 04-18-89
Scale: NIS
Rev: 0
Date: 11/89
CEA-2547