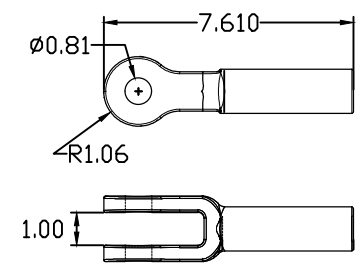
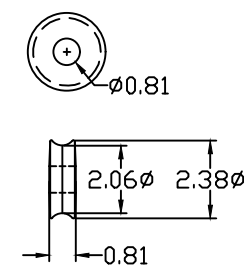
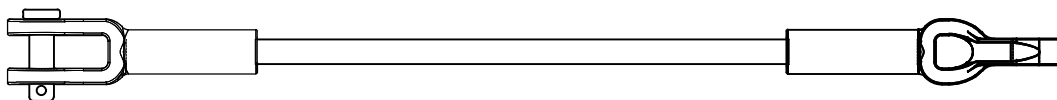
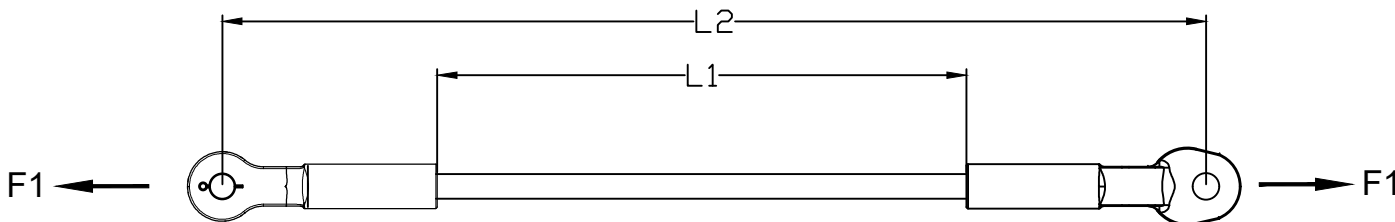
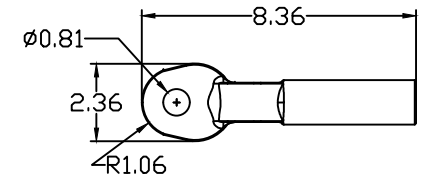
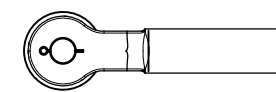


REVISIONS				
NO.	DATE	DESCRIPTION	BY	CKD
1	04-08-15	ADDED 212" SIZE.	WCL	WCL
2	02/12/20	ADDED 72" SIZE.	WCL	WCL



ROLLER VIEW

CLEVIS VIEW



CLEVIS WITH ROLLER

THIMBLE VIEW

NOTES:

- 1.0 MATERIAL
- 1.1 END FITTING - DUCTILE IRON 654512
- 1.2 ROD - FIBERGLASS
- 1.3 CLEVIS PIN - STEEL (CONFORMS TO SAE GRADE 5)
- 1.4 COTTER KEY - STAINLESS STEEL
- 2.0 FINISH
- 2.1 END FITTING - HOT DIP GALVANIZED PER ASTM-A-153
- 2.2 ROD - ULTRAVIOLET PROTECTIVE VEIL COATING, GRAY
- 2.3 CLEVIS PIN - HOT DIP GALVANIZED PER ASTM-A-153
- 2.4 COTTER KEY - NONE
- 3.0 DIMENSIONS IN INCHES

CATALOG NUMBER	LENGTHS (IN)		ULTIMATE STRENGTHS	ELECTRICAL FLASHOVER	
	L1	L2		TENSILE, LBS (F1)	DRY, kV
GCTE30-12	12	25.75	30,000	90	45
GCTE30-18	18	31.75	30,000	135	67.5
GCTE30-24	24	37.75	30,000	180	90
GCTE30-30	30	43.75	30,000	225	112.5
GCTE30-36	36	49.75	30,000	270	135
GCTE30-42	42	55.75	30,000	315	157.5
GCTE30-54	54	67.75	30,000	405	202.5
GCTE30-60	60	73.75	30,000	450	225
GCTE30-72	72	85.75	30,000	540	270
GCTE30-78	78	91.75	30,000	585	292.5
GCTE30-96	96	109.75	30,000	720	360
GCTE30-108	108	121.75	30,000	810	405
GCTE30-120	120	133.75	30,000	900	450
GCTE30-144	144	157.75	30,000	1080	540
GCTE30-212	212	225.75	30,000	1590	795

NOTE: ADDED SUFFIX "R" FOR ROLLER. EX. GCTE30-12R.
 ADDED SUFFIX "MLGW" INDICATES END FITTING PAINTED FLORESCENT BLUE.



GCTE30-"L1" & GCTE30-"L1"-R SERIES
 30K GUY STRAIN INSULATOR
 CLEVIS END FITTING, THIMBLE-EYE END FITTING

This information is confidential and is the property of Maclean Power Systems. It may not be made public or reproduced except that the Customer may make copies for use solely in installation, maintenance, and operation of products supplied by Maclean Power Systems.

DATE: 12-7-11	SCALE: NA	NO.	CEB-3839	R/2	SH.
DWN. BY: KK	CHKD. BY:	APR. BY:			