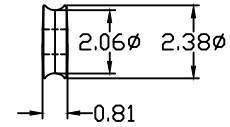
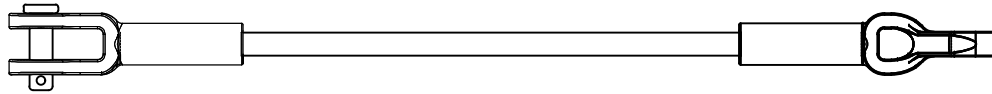
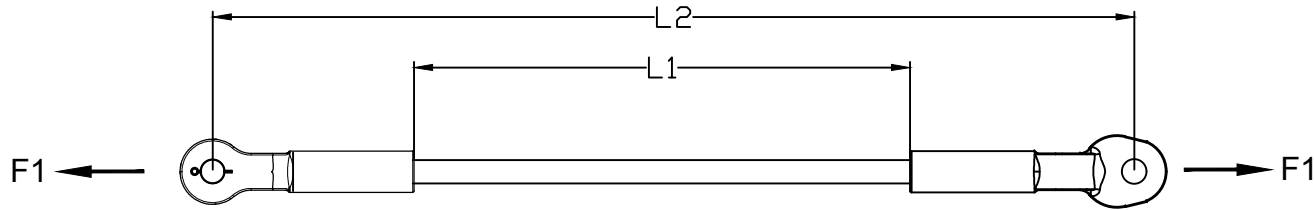
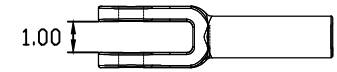
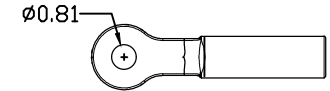


REVISIONS				
NO.	DATE	DESCRIPTION	BY	CKD

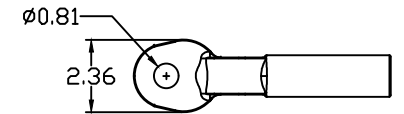
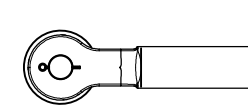


ROLLER VIEW

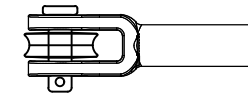


CLEVIS VIEW

CATALOG NUMBER	LENGTHS (IN)		ULTIMATE STRENGTHS		ELECTRICAL WITHSTAND	
	L1	L2	TENSILE, LBS (F1)	DRY, kV	WET, kV	
GCTE36-12	12	25.75	36,000	90	45	
GCTE36-18	18	31.75	36,000	135	67.5	
GCTE36-24	24	37.75	36,000	180	90	
GCTE36-30	30	43.75	36,000	225	112.5	
GCTE36-36	36	49.75	36,000	270	135	
GCTE36-42	42	55.75	36,000	315	157.5	
GCTE36-54	54	67.75	36,000	405	202.5	
GCTE36-60	60	73.75	36,000	450	225	
GCTE36-78	78	91.75	36,000	585	292.5	
GCTE36-96	96	109.75	36,000	720	360	
GCTE36-108	108	121.75	36,000	810	405	
GCTE36-120	120	133.75	36,000	900	450	
GCTE36-144	144	157.75	36,000	1080	540	



CLEVIS WITH ROLLER



THIMBLE VIEW

NOTES:

- 1.0 MATERIAL
 - 1.1 END FITTING - DUCTILE IRON 654512
 - 1.2 ROD - FIBERGLASS
 - 1.3 CLEVIS PIN - STEEL (CONFORMS TO SAE GRADE 5)
 - 1.4 COTTER KEY - STAINLESS STEEL
- 2.0 FINISH
 - 2.1 END FITTING - HOT DIP GALVANIZED PER ASTM-A-153
 - 2.2 ROD - ULTRAVIOLET PROTECTIVE VEIL COATING, GRAY
 - 2.3 CLEVIS PIN - HOT DIP GALVANIZED PER ASTM-A-153
 - 2.4 COTTER KEY - NONE
- 3.0 DIMENSIONS IN INCHES

NOTE: ADDED SUFFIX "R" FOR ROLLER. EX. GCTE36-54R.



MACLEAN POWER SYSTEMS
A Maclean-fogg Company

GCTE36-"L1" & GCTE36-"L1" SERIES
36K GUY STRAIN INSULATOR
CLEVIS END FITTING, THIMBLE-EYE END FITTING

DATE: 12-15-11 SCALE: NA NO. CEB-3845
DWG. BY: CR CHK. BY: APR. OF: 0

This information is confidential and is the property of Maclean Power Systems. It may not be made public or reproduced except that the Customer may make copies for use solely in installation, maintenance, and operation of products supplied by Maclean Power Systems.