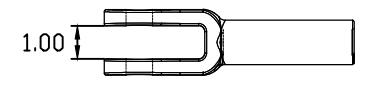
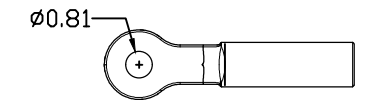
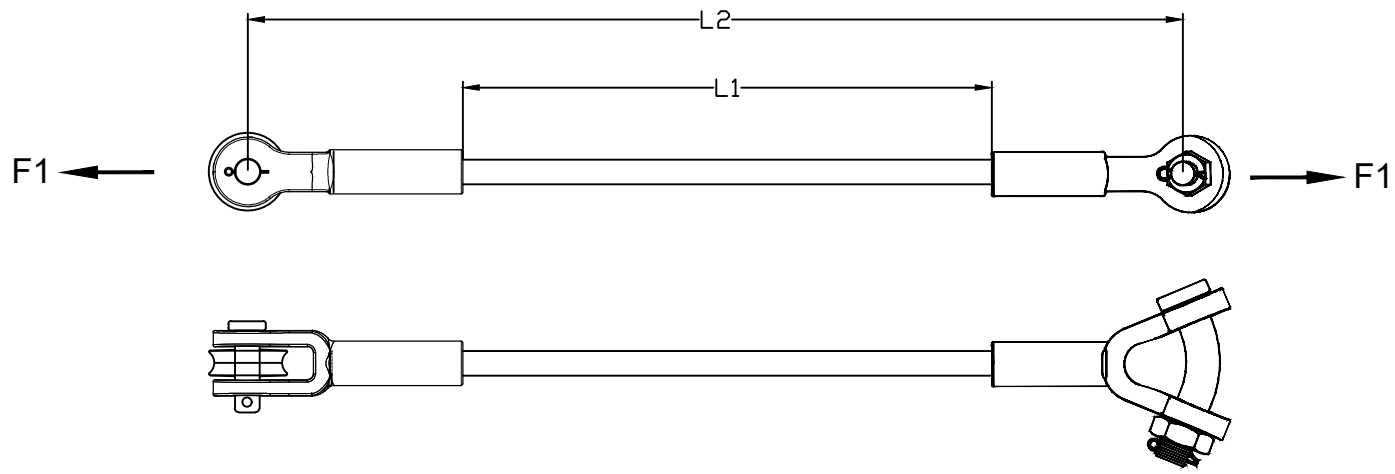
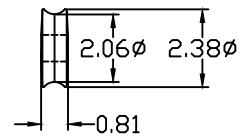
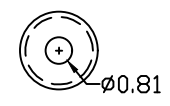


| REVISIONS | | | | |
|-----------|----------|-----------------|-----|-----|
| NO. | DATE | DESCRIPTION | BY | CKD |
| 1 | 11/03/20 | ADDED SUFFIX SC | BHB | |

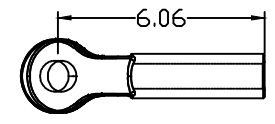
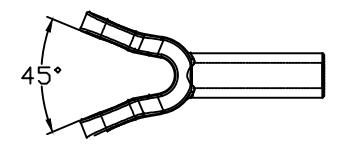


CLEVIS VIEW

| CATALOG NUMBER | | LENGTHS (IN) | | ULTIMATE STRENGTHS | ELECTRICAL FLASHOVER | |
|----------------|-------------|--------------|---------|--------------------|----------------------|---------|
| NO ROLLER | WITH ROLLER | L1 | L2 | TENSILE, LBS (F1) | DRY, kV | WET, kV |
| GYCC30-12 | GYCC30-12R | 12 | 24.563 | 30,000 | 90 | 45 |
| GYCC30-18 | GYCC30-18R | 18 | 30.563 | 30,000 | 135 | 67.5 |
| GYCC30-24 | GYCC30-24R | 24 | 36.563 | 30,000 | 180 | 90 |
| GYCC30-30 | GYCC30-30R | 30 | 42.563 | 30,000 | 225 | 112.5 |
| GYCC30-36 | GYCC30-36R | 36 | 48.563 | 30,000 | 270 | 135 |
| GYCC30-42 | GYCC30-42R | 42 | 54.563 | 30,000 | 315 | 157.5 |
| GYCC30-48 | GYCC30-48R | 48 | 60.563 | 30,000 | 360 | 180 |
| GYCC30-54 | GYCC30-54R | 54 | 66.563 | 30,000 | 405 | 202.5 |
| GYCC30-60 | GYCC30-60R | 60 | 72.563 | 30,000 | 450 | 225 |
| GYCC30-78 | GYCC30-78R | 78 | 90.563 | 30,000 | 585 | 292.5 |
| GYCC30-96 | GYCC30-96R | 96 | 108.563 | 30,000 | 720 | 360 |
| GYCC30-108 | GYCC30-108R | 108 | 120.563 | 30,000 | 810 | 405 |
| GYCC30-120 | GYCC30-120R | 120 | 132.563 | 30,000 | 900 | 450 |
| GYCC30-144 | GYCC30-144R | 144 | 156.563 | 30,000 | 1080 | 540 |



ROLLER VIEW
(OPTIONAL - ADD "R" SUFFIX)



Y-CLEVIS VIEW

NOTES:

- 1.0 MATERIAL
 - 1.1 END FITTING - DUCTILE IRON 654512
 - 1.2 ROD - FIBERGLASS
 - 1.3 CLEVIS PIN - STEEL (EQUIVALENT TO SAE GRADE 5)
 - 1.4 COTTER KEY - STAINLESS STEEL
- 2.0 FINISH
 - 2.1 END FITTING - HOT DIP GALVANIZED PER ASTM-A-153
 - 2.2 ROD - ULTRAVIOLET PROTECTIVE VEIL COATING, GRAY
 - 2.3 CLEVIS PIN - HOT DIP GALVANIZED PER ASTM-A-153
 - 2.4 COTTER KEY - NONE
- 3.0 DIMENSIONS IN INCHES

NOTE: ADDED SUFFIX "SC" INDICATES SILICONE COATED RUBBER FIBERGLASS ROD.
EX. GYCC30-12RSC FOR ONE ROLLER AND SILICONE COATED ROD.

MACLEAN POWER SYSTEMS
A Maclean-fogg Company

GYCC30-"L1" & GYCC30-"L1"-R SERIES
30K GUY STRAIN INSULATOR
Y-CLEVIS END FITTING, CLEVIS END FITTING

This information is confidential and is the property of Maclean Power Systems. It may not be made public or reproduced except that the Customer may make copies for use solely in installation, maintenance, and operation of products supplied by Maclean Power Systems.

| | | | | |
|----------------|-----------|--------------|-----|--------|
| DATE: 12/15/11 | SCALE: NA | NO. CEB-3849 | R 1 | SH. OF |
| DRAWN BY: KK | CHKD BY: | APR. BY: | | |

ENG. REF.