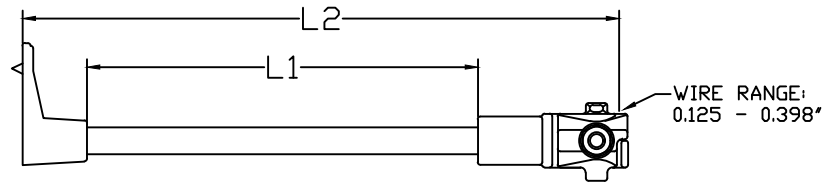
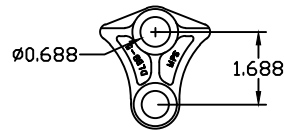


REVISIONS				
NO.	DATE	DESCRIPTION	BY	CKD

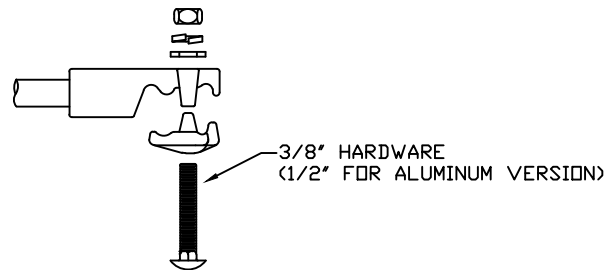
CATALOG NUMBER		LENGTHS (IN)			WIRE RANGE
POLYURETHANE COATED SERIES	SILICONE RUBBER COATED SERIES	L1	L2	D	DIAMETER
DLBB-12	DLBB-12-SC	12	16.5	.625	.125-.398
DLBB-18	DLBB-18-SC	18	22.5	.625	.125-.398
DLBB-24	-	24	28.5	.750	.125-.398
DLBB-30	-	30	34.5	.750	.125-.398
DLBB-36	-	36	40.5	.750	.125-.398



NOTE: ADDED SUFFIX "A" INDICATES ALUMINUM END FITTING. EX. DLBB-12A.
ADDED SUFFIX "DC" INDICATES DATE CODE. EX. DLBB-18A-DC.




BASE VIEW



END FITTING VIEW
(TOP VIEW)

NOTES:

- 1.0 MATERIAL
 - 1.1 BASE - DUCTILE IRON 654512
 - 1.2 ROD - FIBERGLASS
 - 1.3 END FITTING - DUCTILE IRON 654512/ ALUMINUM A356-T6 FOR "A" OPTION
 - 1.4 HARDWARE - STEEL
- 2.0 FINISH
 - 2.1 BASE - HOT DIP GALVANIZED PER ASTM-A-153
 - 2.2 ROD - ULTRAVIOLET PROTECTIVE COATING, MUNSEL GRAY (OPTIONAL) - VULCANIZED SILICONE RUBBER, GRAY
 - 2.3 END FITTING - HOT DIP GALVANIZED PER ASTM-A-153/ NONE FOR "A" OPTION
 - 2.4 HARDWARE - HOT DIP GALVANIZED PER ASTM-A-153
- 3.0 DIMENSIONS IN INCHES

 MACLEAN POWER SYSTEMS A Maclean-fogg Company	
DLBB-"L1" SERIES	
DOWN LEAD BRACKET, DUCK FOOT BASE	

ENG. REF.

This information is confidential and is the property of Maclean Power Systems. It may not be made public or reproduced except that the Customer may make copies for use solely in installation, maintenance, and operation of products supplied by Maclean Power Systems.

DATE: 4-16-12	SCALE: 1:1	NO.:	CEB-3889	R	0	SHL	
CHK: KK	CRD: WCL	APP: WCL					