

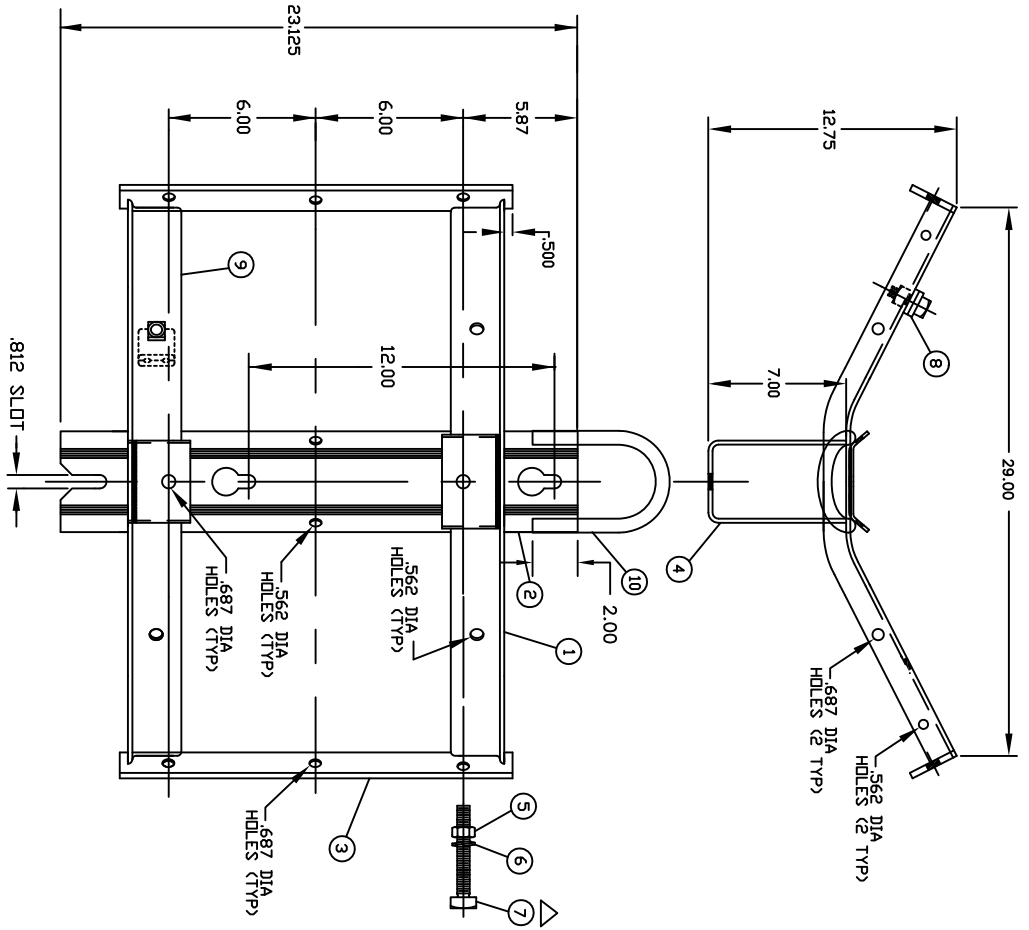
A | B | C | D | E | F

PAPER SIZE	DRAWING NUMBER
B SIZE	GD-J6865
REV	REVISION DATE
A	02-19-2018
	ECO
	D8980

ITEM	QTY.	DESCRIPTION
1	1	2.500 X 1.500 TOP CHANNEL WING
2	2	.187 BACK MOUNTING PLATE
3	2	.250 X 2.500 SIDE MOUNTING PLATE
4	2	.250 FRONT MOUNTING PLATE
5	6	.625 REGULAR HEX NUT
6	6	.625 SPRING LOCKWASHER
7	6	.625 X 2.000 SQ HEAD MACH BOLT
8	1	GROUND CLAMP ASSEMBLY
9	1	2.500 X 1.500 BOTTOM CHANNEL WING
10	1	LIFTING EYE, .563 DIAMETER

NOTES:

1. ALL DIMENSIONS ARE REFERENCE, AND ARE IN INCHES, EXCEPT AS NOTED
2. FOR J26495 CLAMP TO BE INCLUDED IN THE ASSEMBLY ADD SUFFIX "G"
3. ITEM NO 8 REQUIRED ONLY FOR J6865G
4. HOT DIP GALVANIZED (ASTM A-153) AFTER WELDING



This drawing contains confidential information that is the property of Maclean Power, L.L.C. ("Maclean"). Use of Maclean's confidential information without Maclean's express written consent is strictly prohibited and may expose you to legal liability. If you believe that you received this material in error, please destroy it or return it to "Maclean Power, L.L.C., 11411 Addison, Franklin Park, Illinois 60131, USA."

DRAWING-COMPUTER LOCATION:
DRAWING-COMPUTER LOCATION:

TOLERANCES UNLESS SPECIFIED	inch
0.XX	± 0.06
0.XXX	± .031
ANGLE	± 1.0°



DRAWN BY	ENGINEER	CHECKER	CATALOG #	SCALE	DESIGN DATE
JB			J6865	NTS	02/14/00
DRAWING TITLE / DESCRIPTION			DRAWING NUMBER		
BOLTED TYPE TRANSFORMER CLUSTER MOUNT ASSEMBLY			GD-J6865		