

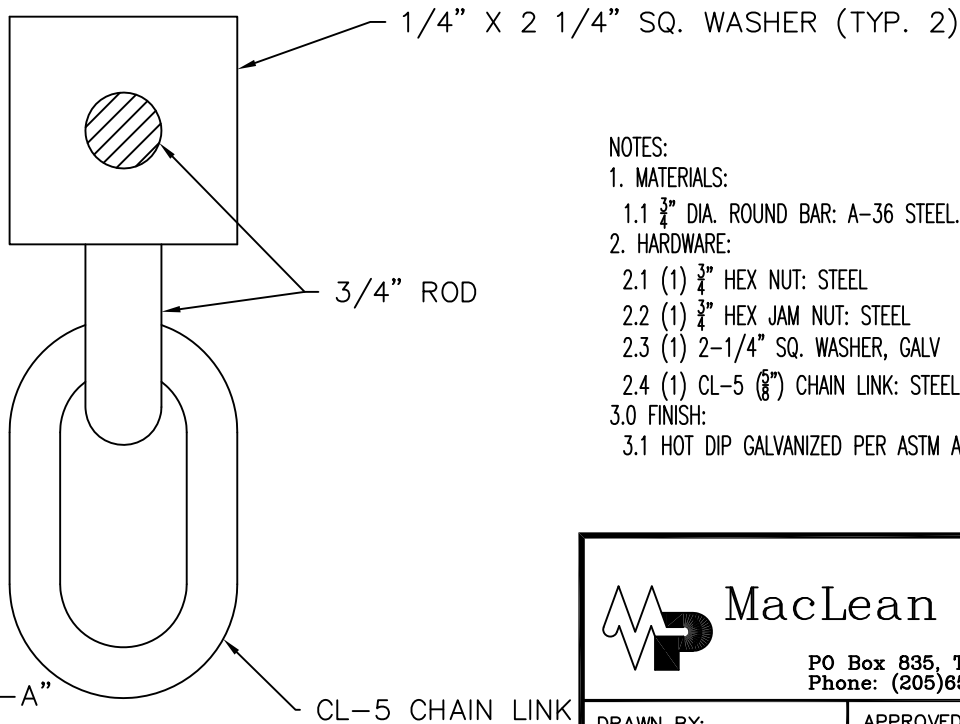
CATALOG NUMBER	L
SF-SWS-12-6	12
SF-SWS-14-6	14
SF-SWS-16-6	16
SF-SWS-18-6	18
SF-SWS-20-6	20
SF-SWS-22-6	22

CL-5 FORGED CHAIN LINK.

UNLESS OTHERWISE SPECIFIED  
DIMENSIONS ARE IN:  
INCHES

TOLERANCES ARE:

.X	+/-0.1
.XX	+/-0.03
.XXX	+/-0.015
ANGLES	+/-1.0°



NOTES:

1. MATERIALS:

1.1 3/4" DIA. ROUND BAR: A-36 STEEL.

2. HARDWARE:

2.1 (1) 3/4" HEX NUT: STEEL

2.2 (1) 3/4" HEX JAM NUT: STEEL

2.3 (1) 2-1/4" SQ. WASHER, GALV

2.4 (1) CL-5 (3/8") CHAIN LINK: STEEL

3.0 FINISH:

3.1 HOT DIP GALVANIZED PER ASTM A-153 SPECS.



MacLean Power Systems

PO Box 835, Trussville, AL 35173  
Phone: (205)655-7400 Fax: (205)655-3530

DRAWN BY:

MH

APPROVED BY:

CHECKED BY:

SCALE:

NONE

CATALOG NO: SF-SWS-"L"-6

SHIELD WIRE SUPPORT WITH CL-5 LINK

A 7-10-19 MADE CUSTOMER DRAWING ECN: D9540 MT

NO. DATE DESCRIPTION BY

DATE: 05-19-99

DRAWING NO: GD-SF-SWS-XX-6

R/A