



# MACLEAN POWER SYSTEMS

A Maclean-Fogg Company

## INSTRUCTIONS FOR INSTALLING DEADEND HARDWARE ON FIBERGLASS CROSSARMS

### I. Scope

These are instructions on how to assemble and install deadend hardware on MacLean Power System fiberglass crossarms for deadend applications.

### II. Instructions

- A. Refer to the catalog number to confirm proper size of oval eyes and washers required for installation, 5/8" or 3/4".
- B. Mark desired location for hole to be drilled for deadend hardware depicted on manufacturing drawings.
- C. Drill proper clearance hole, 11/16" or 13/16", with carbide bit at location marks until bit reaches through cross-section of fiberglass crossarm.
- D. Insert 9" double arming bolt through the hole where an oval eye is required.
- E. Place Pentech washer on the stud with contour portion of washer properly fits around fillets of crossarm.
- F. Attach the oval eye and tighten down to Pentech washer. The stud should protrude through the oval eye approximately 1/8". See Figures 1, 2, 3 for reference.
- G. Repeat steps B through D at required locations.
- H. After both oval eyes are assembled to the stud, they should be tightened until snug. Do not over tighten oval eyes. Oval eyes shall be perpendicular to tube. See Figure 4 for reference.



Figure 1: Correct Thread amount showing (1 to 3 threads nominal)

Figure 2: **Incorrect** thread amount showing (no more than 3 threads)

Figure 3: **Incorrect** thread amount showing (less than 1 thread is not enough)



# MACLEAN POWER SYSTEMS

A Maclean-Fogg Company

Note: Catalog numbers not ending in -2E, -3E, -CE, or -4E receive an oval eye on one side. This side must be the same side that the base goes on. A Pentech washer must go on both sides of the tube. A nut and washer are applied on the opposite side of the oval eye. Oval eyes must be oriented perpendicular to the tube.

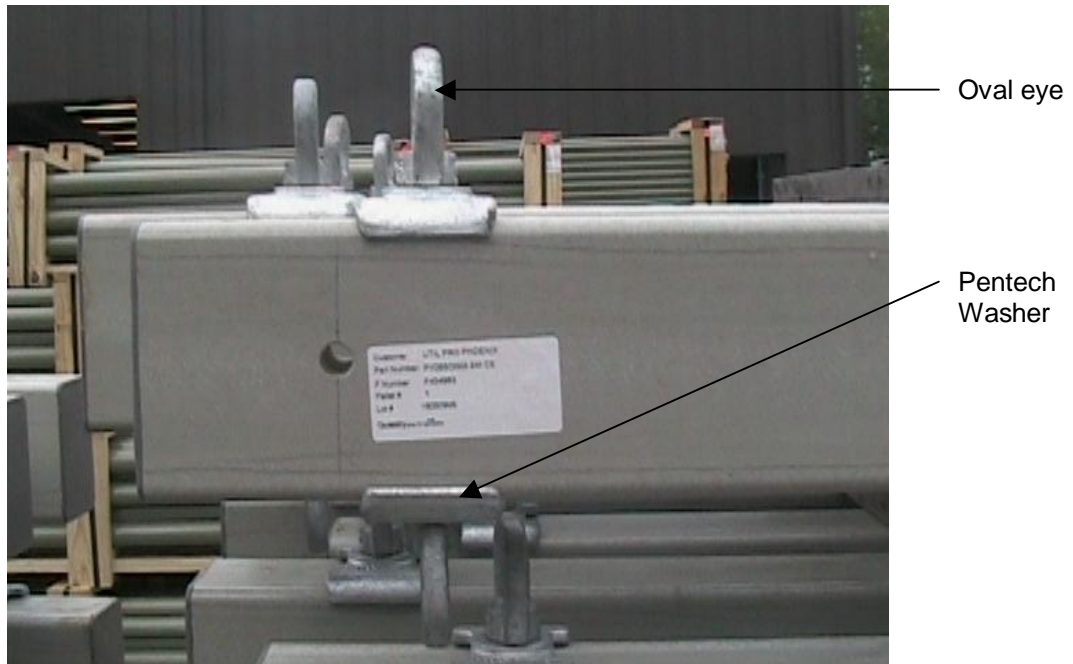


Figure 4: Correct installation of oval eyes

Note: Catalog numbers ending in -2E, -3E, -CE, or -4E receive an oval eye on both sides. A Pentech washer must go on both sides of the tube before attaching the oval eyes. Oval eyes must be oriented perpendicular to the tube.