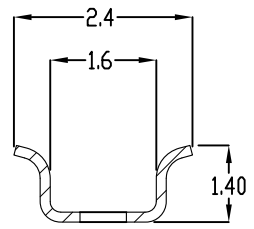
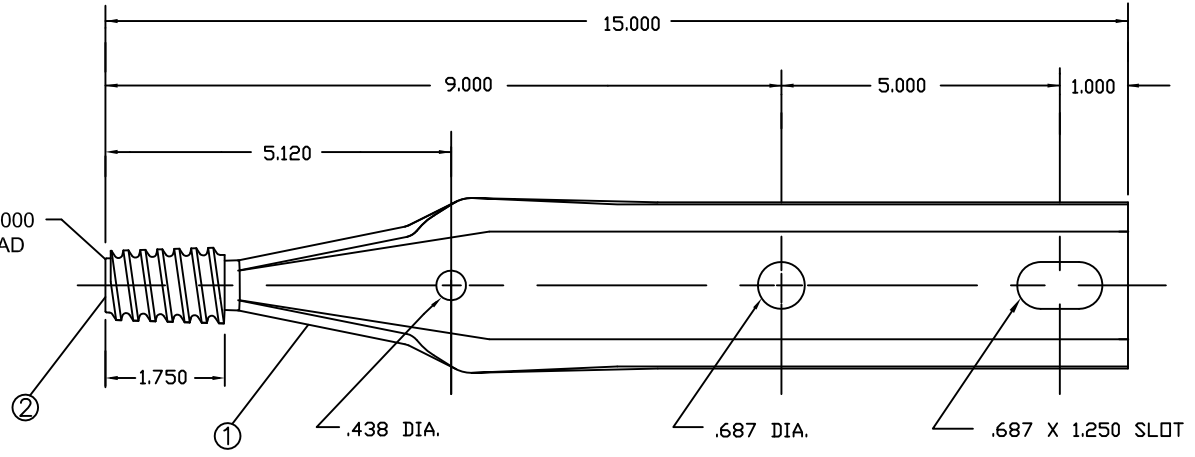


A | B | C | D | E | F

PAPER SIZE		DRAWING NUMBER	
B SIZE		GD-J715Z	
REV	REVISION DATE	ECO	
A	06-11-19	D9557	

1



END VIEW

2

ITEM	DESCRIPTION
1	POLE TOP PIN STEEL BODY
2	STANDARD 1.000 NYLON THREAD

NOTES:

- 1. PIN STEEL GALVANIZED PER ASTM A-153.
- 2. ALL DIMENSIONS ARE REFERENCE AND IN INCHES.

3

CATALOG #	J715Z
-----------	-------

4

This drawing contains confidential information that is the property of MacLean Power, L.L.C. ("MacLean"). Use of MacLean's confidential information without MacLean's express written consent is strictly prohibited and may expose you to legal liability. If you believe that you received this material in error, please destroy it or return it to "MacLean Power, L.L.C., 11411 Addison, Franklin Park, Illinois 60131, USA."

TOLERANCES UNLESS SPECIFIED	
inch	
0.XX	----
0.XXX	----
ANGLE	----



DRAWN BY	ENGINEER	CHECKER	CATALOG #	SCALE	DESIGN DATE
MTT	DEK	MTT	J715Z	NTS	08/08/08
DRAWING TITLE / DESCRIPTION					DRAWING NUMBER
POLE TOP PIN					GD-J715Z