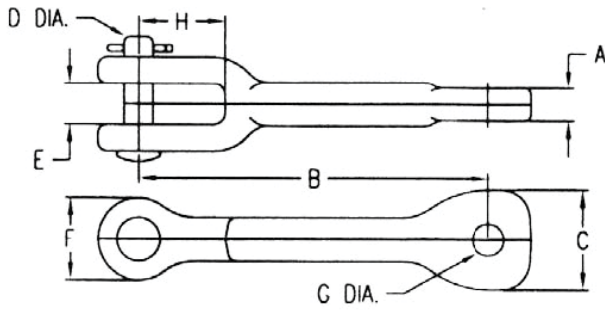




Clevis Type Insulator Fittings



Clevis - Eye, Long

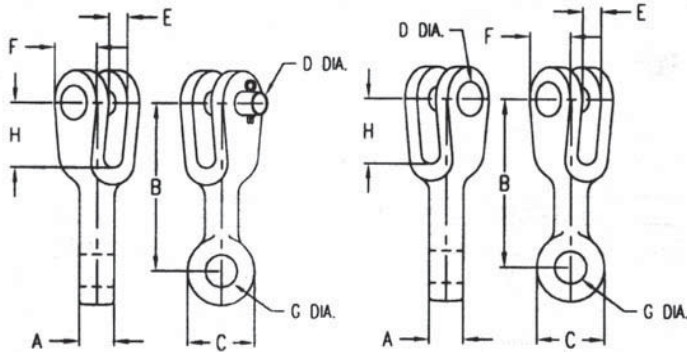
Material

Ductile iron hot dip galvanized

Catalog Number	A	B	C	D	E	F	G	H	Ultimate Strength (lbs)	Weight /100 (lbs)
SCEL-55-687	11/16	7 7/16	2 1/8	5/8	7/8	1 3/4	11/16	3 3/4	30000	260
SCEL-55-687A	11/16	9	2 1/8	5/8	7/8	1 3/4	11/16	3 3/4	30000	290
SCEL-55-687B	11/16	12 1/2	2 1/8	5/8	7/8	1 3/4	11/16	3 3/4	30000	330
SCEL-55-687C	11/16	16	2 1/8	5/8	7/8	1 3/4	11/16	3 3/4	30000	370
SCEL-66-1000	1	9	1 15/16	3/4	1 3/16	2 1/4	13/16	1 5/8	30000	298
SCEL-68-1125	1 1/8	5 1/2	2 1/4	3/4	7/8	2 1/8	1 1/16	2 1/8	40000	442
SCEL-77-1125	1 1/8	8 5/8	2 1/2	7/8	1 1/4	2 1/2	15/16	2	60000	525
SCEL-77-1125A	1 1/8	11	2 1/2	7/8	1 1/4	2 1/2	15/16	2	60000	620

Notes:

1) For bolt, nut and cotter instead of clevis pin and cotter, add suffix "-BC" to catalog number



Clevis - Eye, Angled

Material

Ductile iron hot dip galvanized

Catalog Number	Fig.	A	B	C	D	E	F	G	H	Row	Ultimate Strength (lbs)	Weight /100 (lbs)
CEA-68-125L	2	1 1/8	5 1/2	2 1/4	3/4	7/8	2 1/8	1 1/16	2 1/8	45	45000	475
CEA-68-1125R	1	1 1/8	5 1/2	2 1/4	3/4	7/8	2 1/8	1/16	2 1/8	45	45000	475