

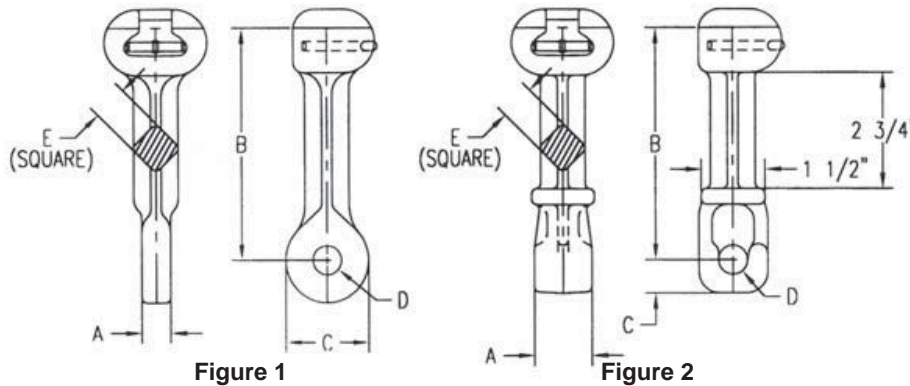


# Socket Type Insulator Fittings

## Socket - Eye, Long

### Material

Fitting: Ductile iron hot dip galvanized  
Cotter Pin: Stainless steel



Catalog Number	Fig.	For Insulator Class	A	B	C	D	E	Ultimate Strength (lbs)	Weight /100 (lbs)
SEL-687	1	ANSI 52-3 & 5	11/16	5 1/2	2 3/4	11/16	7/8	35000	230
SEL-1125	2	ANSI 52-3 & 5	1 1/8	5 1/2	3/4	11/16	7/8	30000	225
SEL-1375	2	ANSI 52-3 & 5	1 3/8	5 1/2	3/4	11/16	7/8	30000	235
SEL-1750	2	ANSI 52-3 & 5	1 3/4	5 1/2	3	11/16	7/8	30000	245

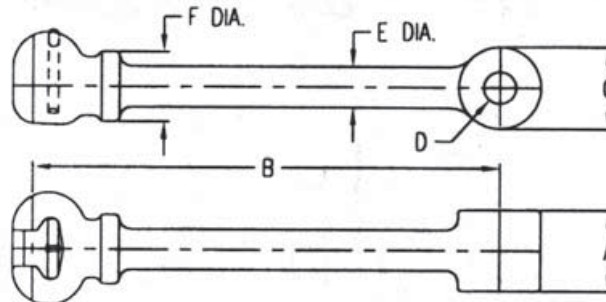
### Notes:

1) For ANSI Class 52-3 and 52-5 insulators

## Socket - Eye, Hot Line

### Material

Fitting: Ductile iron hot dip galvanized  
Cotter Pin: Stainless steel



Catalog Number	For Insulator Class	A	B	C	D	E	F	Ultimate Strength (lbs)	Weight /100 (lbs)
SEHL-625	ANSI 52-3 & 5	5/8	10	3	11/16	15/16	1 1/2	30000	280
SEHL-625-8	ANSI 52-3 & 5	5/8	10	2	1 1/16	15/16	1 1/2	30000	280
SEHL-687	ANSI 52-3 & 5	11/16	12 7/8	2	11/16	15/16	1 1/2	30000	350
SEHL-750	ANSI 52-3 & 5	3/4	8 3/8	1 3/4	11/16	15/16	1 1/2	30000	272
HLSE-750-7	ANSI 52-3 & 5	3/4	8 3/8	2	15/16	7/8	1 1/2	30000	264
HLSE-30-65-5	ANSI 52-3 & 5	3/4	10	1 9/16	11/16	7/8	1 1/2	30000	319
SEHL-1125	ANSI 52-3 & 5	1 1/8	8 3/8	1 9/16	11/16	15/16	1 1/2	30000	265
SEHL-1125-6	ANSI 52-3 & 5	1 1/8	8 3/8	1 3/4	13/16	15/16	1 1/2	30000	265
SEHL-1375	ANSI 52-3 & 5	1 3/8	10	1 3/4	11/16	15/16	1 1/2	30000	270
SEHL-1375-6	ANSI 52-3 & 5	1 3/8	10	1 3/4	13/16	15/16	1 1/2	30000	268
SEHL-1625	ANSI 52-3 & 5	1 5/8	10	1 3/4	11/16	15/16	1 1/2	30000	272
SEHL-1625-6	ANSI 52-3 & 5	1 5/8	10	1 3/4	13/16	15/16	1 1/2	30000	272
SEHL-1750	ANSI 52-3 & 5	1 3/4	10	1 3/4	11/16	15/16	1 1/2	30000	275
SEHL-1750-6	ANSI 52-3 & 5	1 3/4	10	1 3/4	13/16	15/16	1 1/2	30000	275

### Notes:

1) ANSI 52-5 & IEC 16mm are generally accepted as being interchangeable