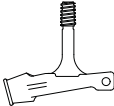
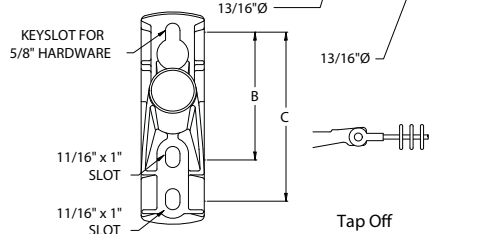
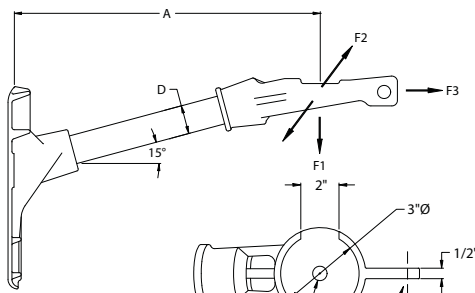




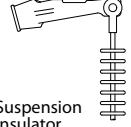
Equipment Brackets



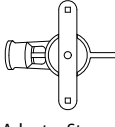
1" or 1-3/8" Pin



Post Type Insulator



Suspension Insulator



Adapter Strap

Single Phase Universal

Features

- Accepts 5/8" mounting hardware
- Cleats to prevent bracket rotation on wood poles

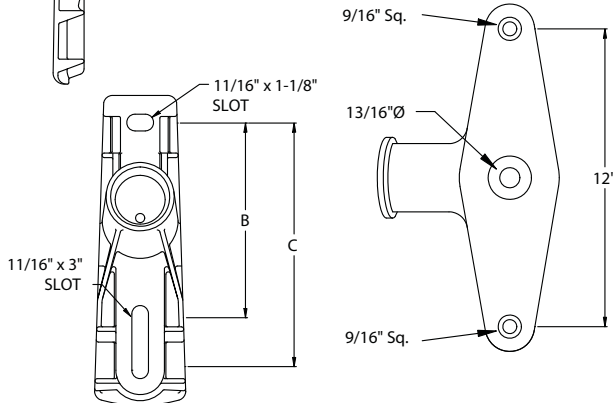
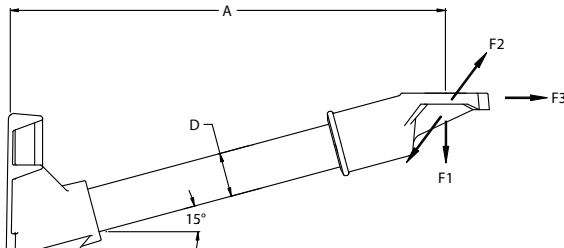
Material

Base: Ductile iron hot dip galvanized ASTM A-153
 End Fitting: Aluminum A356-T6
 Rod: Fiberglass gray ultraviolet (UV) protective coating

Catalog Number	Dimensions (In)		Min Ultimate Load (Lbs)			Bolt Spacing (In)		Weight (Lbs)
	A	D	F1 Vert	F2 Long	F3 Trans	B	C	
G1MAA312AU	12	1.5	1800	1400	10000	6	8	6.9
G1MAA318AU	18	1.5	1200	900	10000	6	8	7.6
G1MAA324AU	24	1.5	900	700	10000	6	8	8.4
G1HAA312AU	12	2.0	3000	1800	10000	8		12.2
G1HAA318AU	18	2.0	2250	1500	10000	8		13.6
G1HAA324AU	24	2.0	1750	1100	10000	8		15.0

Notes:

- 1) Lengths shown are considered standard; for other lengths, consult factory
- 2) Add "SC" for silicone coated rod (harsh environments)
- 3) Add "B" for standard hardware (1/2" x 2" carriage bolt; 1/2" hex nut; 1/2" lock washer)
- 4) For other options, thread sizes, and optional base and end fittings, reference Fiberglass Catalog Numbering System Matrix



Single Phase SCADA

Features

- Accepts 5/8" mounting hardware
- Tab retainers for banding provisions
- Recessed cavity in base to allow double nutting for back to back mounting

Material

Base: Aluminum A356-T6
 End Fitting: Aluminum A356-T6
 Rod: Fiberglass gray ultraviolet (UV) protective coating

Catalog Number	Dimensions (In)		Min Ultimate Load (Lbs)			Bolt Spacing (In)		Weight (Lbs)
	A	D	F1 Vert	F2 Long	F3 Trans	B	C	
G1HAA526AKC1	26	2.0	2500	1650	10000	8	10	12.3

Notes:

- 1) Lengths shown are considered standard; for other lengths, consult factory
- 2) Add "SC" for silicone coated rod (harsh environments)
- 3) For other options, thread sizes, and optional base and end fittings, reference Fiberglass Catalog Numbering System Matrix