



Crossarm

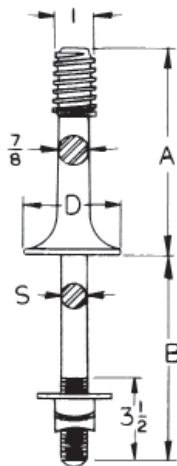
Features

- Crossarm pins are forged in one piece from alloy steel
- Large bases distribute loads without crushing flat wood crossarms
- Short shank pins used on steel crossarms while long shank pins used on wood crossarms
- Long shank pins are supplied with a square washer, square nut and MF concave lockwasher
- Short shank pins are supplied with a split coil lockwasher and a square nut
- ANSI standard nylon alloy or cast lead threads for pin type insulators
- Pins with "Z" suffix furnished with insulator threads produced from J.E.M. (Joslyn Engineered Material) nylon alloy compound

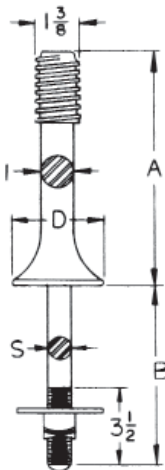
Material

Pin Body: Steel hot dip galvanized

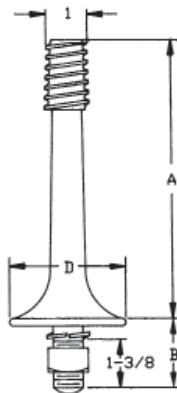
Threads: Nylon alloy or lead



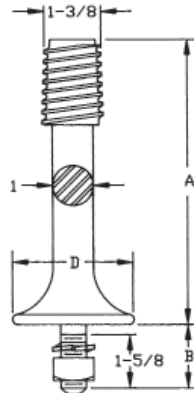
Long Shank Steel Pin with 1" Insulator Thread



Long Shank Steel Pin with 1 3/8" Insulator Thread
J608Z & J647Z



Short Shank Steel Pin with 1" Insulator Thread
J629



Short Shank Steel Pin with 1 3/8" Insulator Thread
J631 & J631-DC

Long Shank for insulators with 1" threaded pin hole							
Catalog Number	Thread Material	A	B	D	S	Washer (sq in)	Weight /100 (lbs)
J626Z	Nylon Alloy	6	6 1/2	2 3/4	5/8	2	194
J24626Z	Nylon Alloy	8	5 3/4	3	5/8	2	336
J606Z	Nylon Alloy	6	6 1/2	2 3/4	3/4	2 1/4	246
J607Z	Nylon Alloy	7	6 1/2	2 3/4	3/4	2 1/4	260
J607Z-DE	Nylon Alloy	7	8	2 3/4	3/4	3	265

Long Shank for insulators with 1 3/8" threaded pin hole							
Catalog Number	Thread Material	A	B	D	S	Washer (sq in)	Weight /100 (lbs)
J647Z	Nylon Alloy	7	7	3	5/8	2 1/4	302
J608Z	Nylon Alloy	8	7	3	3/4	3	482

Short Shank for insulators with 1" threaded pin hole						
Catalog Number	Thread Material	A	B	D	S	Weight /100 (lbs)
J629	Lead	7	1 3/8	2 3/4	3/4	210

Short Shank for insulators with 1 3/8" threaded pin hole						
Catalog Number	Thread Material	A	B	D	S	Weight /100 (lbs)
J631	Lead	8	1 5/8	3	3/4	380
J635-DC	Lead	12	1 5/8	3	3/4	584