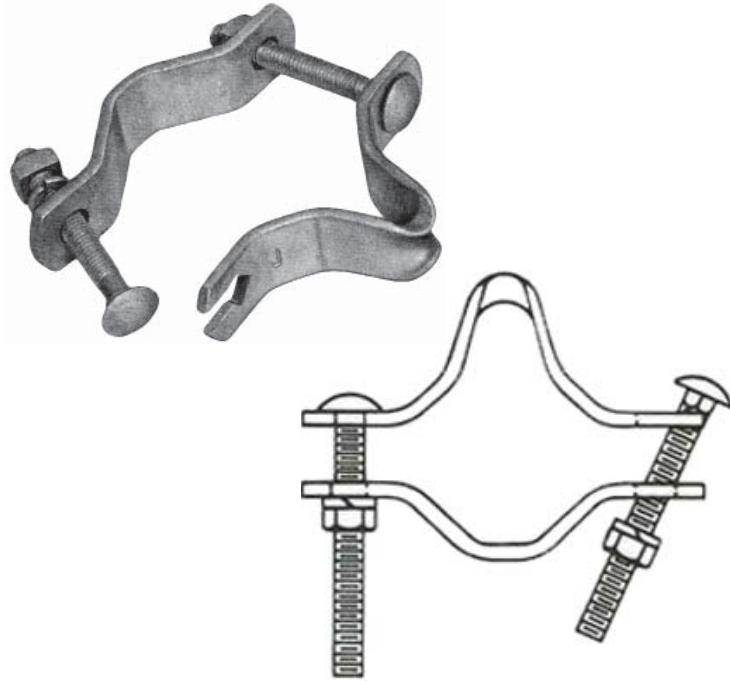




# Brackets



## Service Mast

Service Mast brackets are used with service wedge clamps to attach the neutral wire of a drop cable to the service mast. The bracket is attached to pipe service masts to provide a secure attachment point for service drop wires. The center of the front strap is formed in a generous radius to prevent damaging the bail of service wedge clamps.

The brackets incorporate a specially designed slot on one end of the front strap to permit installation of the bracket without removing the bolt. The special slot feature captures the carriage bolt shoulder to prevent it from turning or slipping out after installation.

### Material

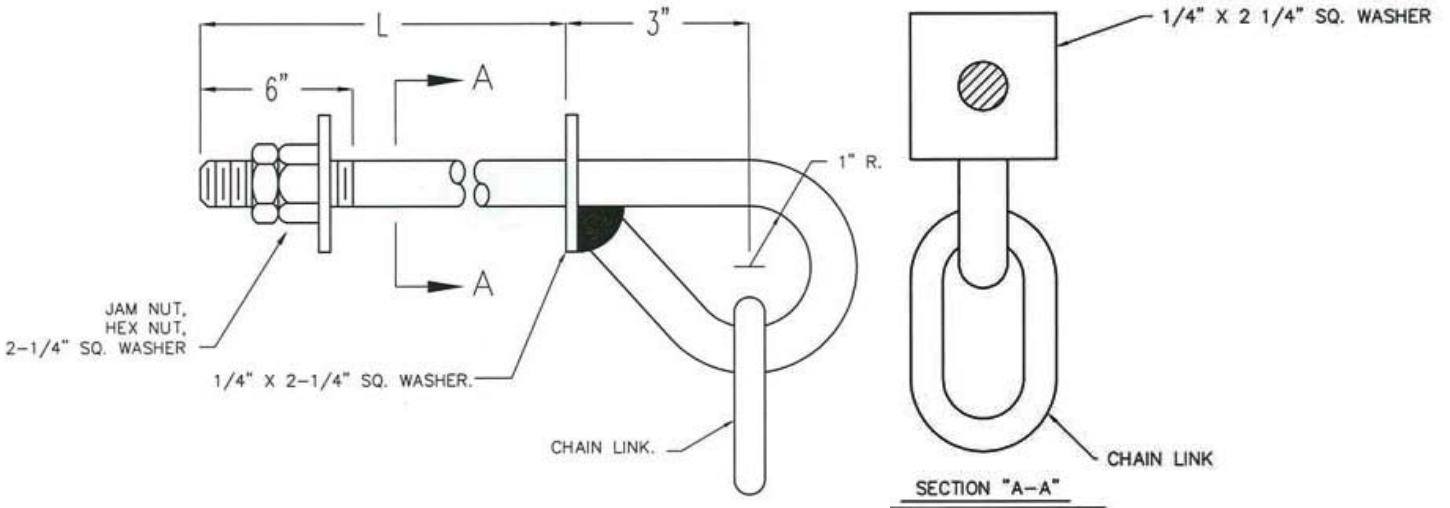
Steel hot dip galvanized

| Catalog Number | Pipe Diameter Range (in) | Weight /100 (lbs) |
|----------------|--------------------------|-------------------|
| J0590          | 1 1/4 - 3                | 105               |
| SMB40          | 2 - 4                    | 150               |

## Shield Wire Support

### Material

Steel hot dip galvanized



| Catalog Number | A   | L  | Weight/100 (lbs) |
|----------------|-----|----|------------------|
| SF-SWS-12-5    | 5/8 | 12 | 300              |
| SF-SWS-12-6    | 3/4 | 12 | 500              |
| SF-SWS-14-5    | 5/8 | 14 | 500              |
| SF-SWS-14-6    | 3/4 | 14 | 500              |

### Notes:

"-5" suffix has 1/2" diameter link  
 "-6" suffix has 5/8" diameter link