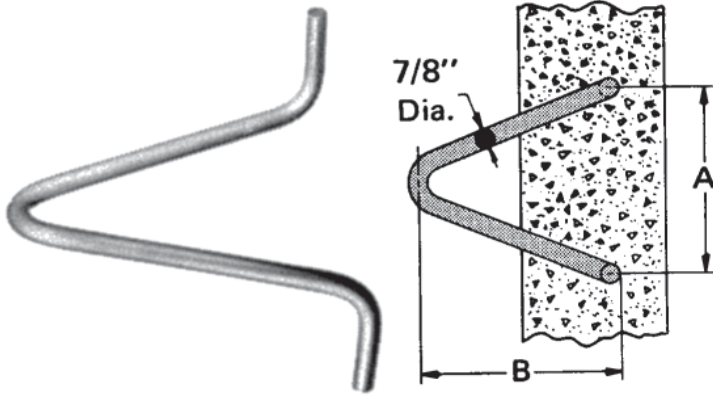




# Irons and Links



## Pulling-In Iron

Pulling-In irons are set into the concrete or brick walls of street vaults opposite all duct entrances to provide strong, convenient attachment for pulling-in blocks for installing or removing cables.

### Features

- Designed to straddle one brick

### Material

7/8" diameter steel hot dip galvanized

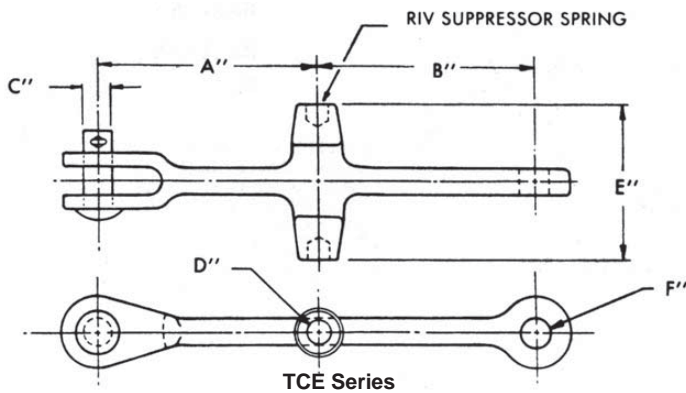
Catalog Number	A	B	Weight /100 (lbs)
J8119	8 3/8	9	490
J8120	11	13 5/16	600

## Extension Link

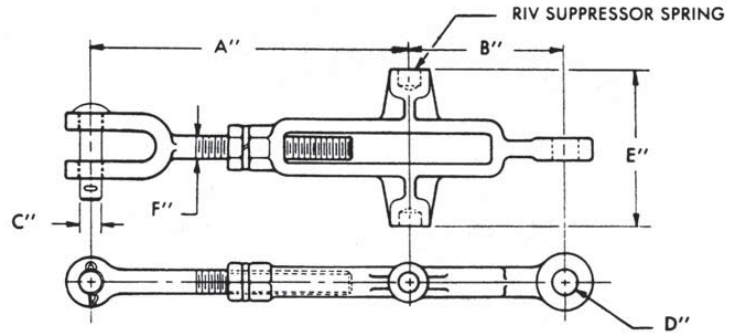
Extension links for trunnion mounting brackets are used for attachment points for deadend insulators and clamps.

### Material

Casting: Ductile iron hot dip galvanized  
 Hardware: Steel hot dip galvanized  
 Cotter Key: Stainless Steel



TCE Series



TCEA Series

Catalog Number	A	B	C	D	E	F	G	Min Ultimate Strength (lbs)	Weight /100 (lbs)
TCE-84	8	4	5/8	19/32	3 7/8	11/16	11/16	15000	300
TCE-166	16	6	5/8	19/32	3 7/8	11/16	11/16	15000	400
TCEA-84	7 - 9 1/2	4	5/8	11/16	3 7/8	3 7/8	5/8	15000	300



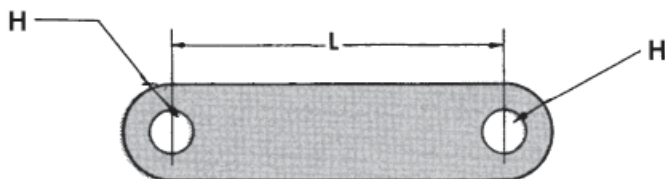
## Extension Link

### Features

Ultimate tensile strength 20,000 lbs

### Material

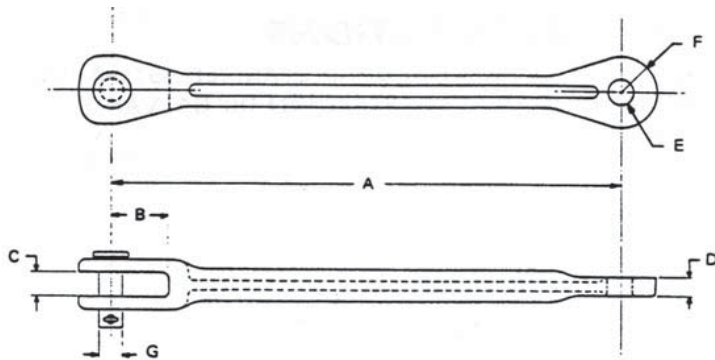
Steel hot dip galvanized



Catalog Number	Steel Size	L	H	Weight /100 (lbs)
J2520	1/2 x 1 3/4"	6	13/16	176



# Links



Catalog Number	A	B	C	D	E	F	G	Min Ultimate Strength (lbs)	Weight/100 (lbs)
LCE-14	14	1 1/2	11/16	1/2	11/16	31/32	5/8	12500	116

### Extension

Extension links provide clearance from the pole or crossarm to the insulator string at deadend installations.

### Material

Casting: Aluminum alloy  
 Hardware: Steel hot dip galvanized  
 Cotter Key: Stainless Steel



### Extension

Extension links are used at deadends and corner structures to set the insulator string out from the pole or crossarm to provide more climbing space.

Each link is made from two pieces of 1-1/2" x 3/16" steel that are fabricated, galvanized, then riveted together with a stainless steel rivet. Riveting after galvanizing assures that there is zinc between the two pieces of steel for maximum corrosion resistance.

### Features

- 3/4" clevis opening with 5/8" diameter bolt and self-locking cotter
- Eye end has 11/16" hole
- Ultimate tensile strength 13,550 lbs

### Material

Steel hot dip galvanized

Catalog Number	Hole Center to Bolt Center (in)	Weight /100 (lbs)
J6658	14	278
J6659	20	376



### Extension

Extension links provide clearance from the pole or crossarm to the insulator string at deadend installations.

### Material

Casting: Ductile iron hot dip galvanized  
 Hardware: Steel hot dip galvanized  
 Cotter Key: Stainless Steel

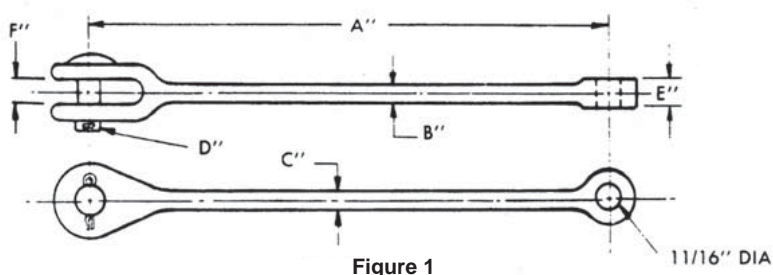


Figure 1

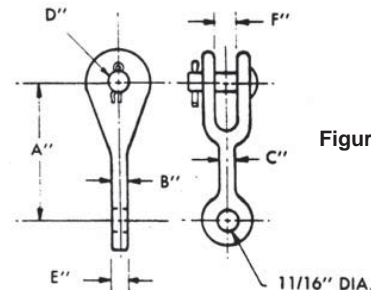


Figure 2

Catalog Number	Fig	A	B	C	D	E	F	Min Ultimate Strength (lbs)	Weight/100 (lbs)
CEL 10	1	10	1/2	5/8	5/8	9/16	11/16	15000	150
CEL 12	1	12	1/2	5/8	5/8	9/16	11/16	15000	155
CEL 14	1	14	9/16	5/8	5/8	5/8	11/16	15000	175
CEL90 4	2	4	9/16	9/16	5/8	5/8	11/16	15000	125