

MPS Catalog Number:

S1 40 90 048 MX AL 031

Date:

01/23/2014

END FITTINGS

Tower End Fitting:

Y-Clevis (Forged Steel)

Line End Fitting:

Eye (Forged Steel)

MATERIAL

Corona Ring (Tower):

None

Corona Ring (Line):

None

Corona Rings are recommended for applications of 230 kV and above

Number of Sheds:

15 large 16 standard

Rod Diameter:

16 mm

Weight Estimate:

11 lbs

5 kg

DIMENSIONAL VALUES

Section Length (L):

61.6 in 1,567 mm

Rubber Length (X):

48.4 in 1,229 mm

Standard Shed Height (P1):

1.5 in 38 mm

Large Shed Height (P2):

2 in 51 mm

Projection Ratio (S/P):

- 1.5

Shed Spacing (S):

3 in 76 mm

Dry Arc Distance:

50.7 in 1,288 mm

Leakage Distance:

140.1 in 3,559 mm

ELECTRICAL VALUES

60 Hz Dry Flashover:

497 kV Min. Withstand: 459 kV

60 Hz Wet Flashover:

443 kV Min. Withstand: 386 kV

Pos. Critical Impulse Flashover:

849 kV Min. Withstand: 739 kV

Neg. Critical Impulse Flashover:

898 kV Min. Withstand: 789 kV

MECHANICAL VALUES

Specified Mech. Load (SML):

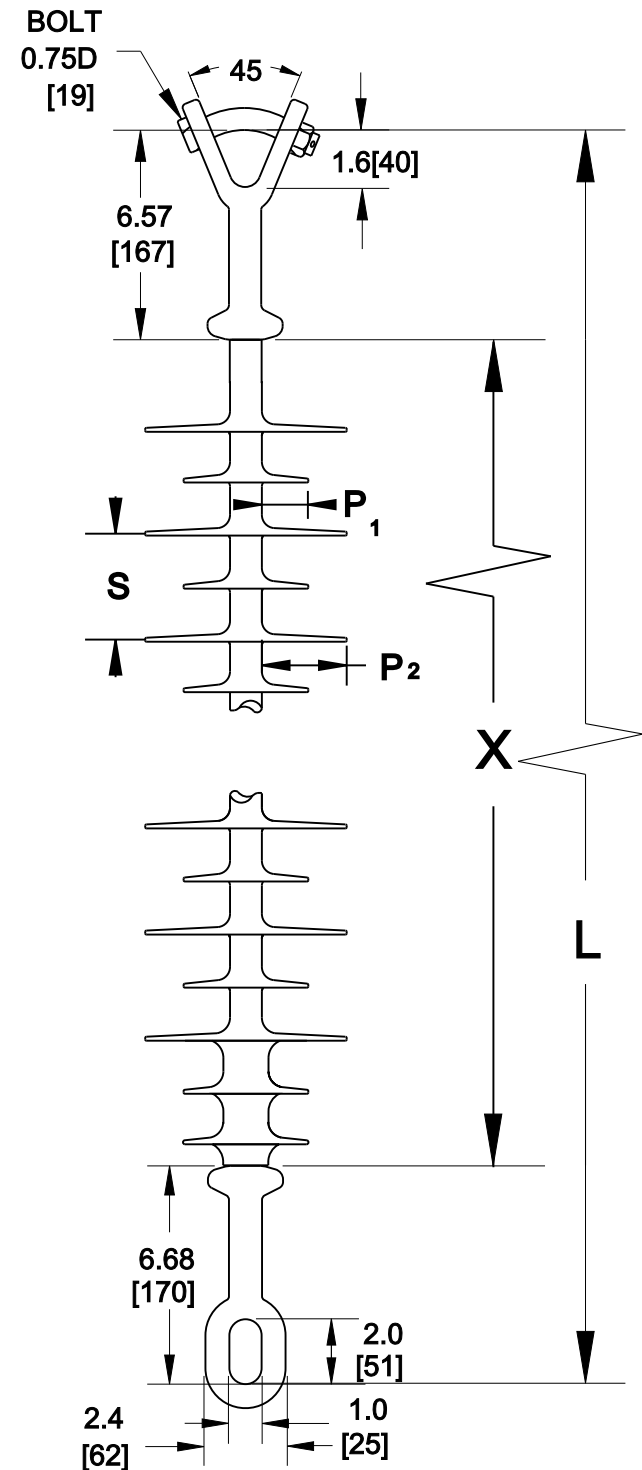
25,000 lbs 111.2 kN

Routine Test Load (RTL):

12,500 lbs 55.6 kN

Dimensions: inches [millimeters]

Note: Drawing not actual depiction of insulator appearance



Silicone Rubber Sheath & Sheds
Complies with applicable ANSI and IEC standards.