

MPS Catalog Number:  
Date:

S1 40 90 066 MA AL 043  
01/23/2014

**END FITTINGS**

Tower End Fitting: Y-Clevis (Forged Steel)  
Line End Fitting: Eye (Forged Steel)

**MATERIAL**

Corona Ring (Tower): None  
Corona Ring (Line): 8" Corona Ring  
Corona Rings are recommended for applications of 230 kV and above  
Number of Sheds: 21 large 22 standard  
Rod Diameter: 16 mm  
Weight Estimate: 15.7 lbs 7.1 kg

**DIMENSIONAL VALUES**

Section Length (L): 79.6 in 2,024 mm  
Rubber Length (X): 66.4 in 1,687 mm  
Standard Shed Height (P1): 1.5 in 38 mm  
Large Shed Height (P2): 2 in 51 mm  
Projection Ratio (S/P): - 1.5  
Shed Spacing (S): 3 in 76 mm  
Dry Arc Distance: 66.1 in 1,679 mm  
Leakage Distance: 195 in 4,953 mm

**ELECTRICAL VALUES**

60 Hz Dry Flashover:	644 kV	Min. Withstand:	588 kV
60 Hz Wet Flashover:	563 kV	Min. Withstand:	490 kV
Pos. Critical Impulse Flashover:	1,084 kV	Min. Withstand:	956 kV
Neg. Critical Impulse Flashover:	1,140 kV	Min. Withstand:	1,010 kV

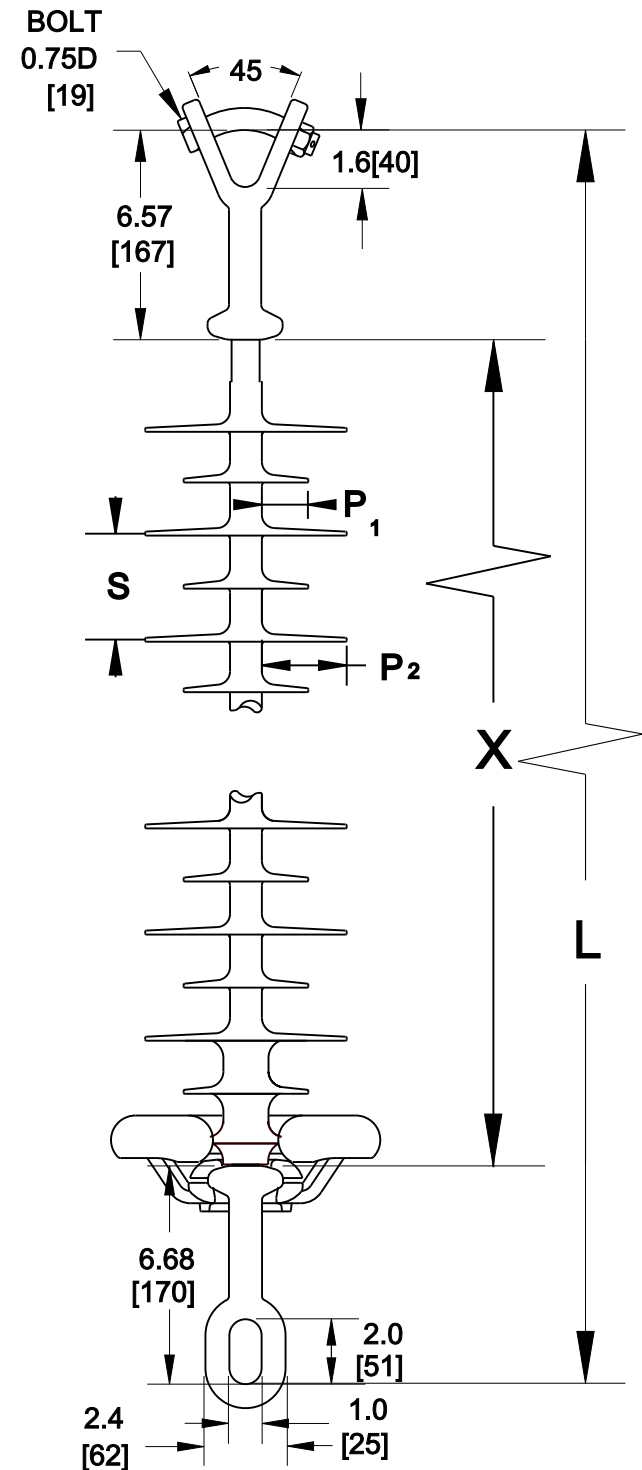
**MECHANICAL VALUES**

Specified Mech. Load (SML):	25,000 lbs	111.2 kN
Routine Test Load (RTL):	12,500 lbs	55.6 kN

This drawing contains confidential information that is property of MacLean Power L.L.C ('MacLean'). Use of MacLean's confidential information without MacLean's express written consent is strictly prohibited and may expose you to legal liability. If you believe that you received this material in error, please destroy it or return it to 'MacLean Power, L.L.C., 7801 Park Place Rd, York, SC, 29745, USA.'

Dimensions: inches [millimeters]

Note: Drawing not actual depiction of insulator appearance



Silicone Rubber Sheath & Sheds  
Complies with applicable ANSI and IEC standards.