

MPS Catalog Number:

S1 90 80 072 MX AL 047

Date:

01/24/2014

END FITTINGS

Tower End Fitting:

Eye (Forged Steel)

Line End Fitting:

Ball (Forged Steel) (ANSI 52-5)

MATERIAL

Corona Ring (Tower):

None

Corona Ring (Line):

None

Corona Rings are recommended for applications of 230 kV and above

Number of Sheds:

23 large 24 standard

Rod Diameter:

16 mm

Weight Estimate:

13.6 lbs 6.2 kg

DIMENSIONAL VALUES

Section Length (L):

84.2 in 2,139 mm

Rubber Length (X):

72.4 in 1,839 mm

Standard Shed Height (P1):

1.5 in 38 mm

Large Shed Height (P2):

2 in 51 mm

Projection Ratio (S/P):

- 1.5

Shed Spacing (S):

3 in 76 mm

Dry Arc Distance:

74.7 in 1,897 mm

Leakage Distance:

213.3 in 5,418 mm

ELECTRICAL VALUES

60 Hz Dry Flashover:

726 kV Min. Withstand: 659 kV

60 Hz Wet Flashover:

627 kV Min. Withstand: 545 kV

Pos. Critical Impulse Flashover:

1,213 kV Min. Withstand: 1,077 kV

Neg. Critical Impulse Flashover:

1,272 kV Min. Withstand: 1,134 kV

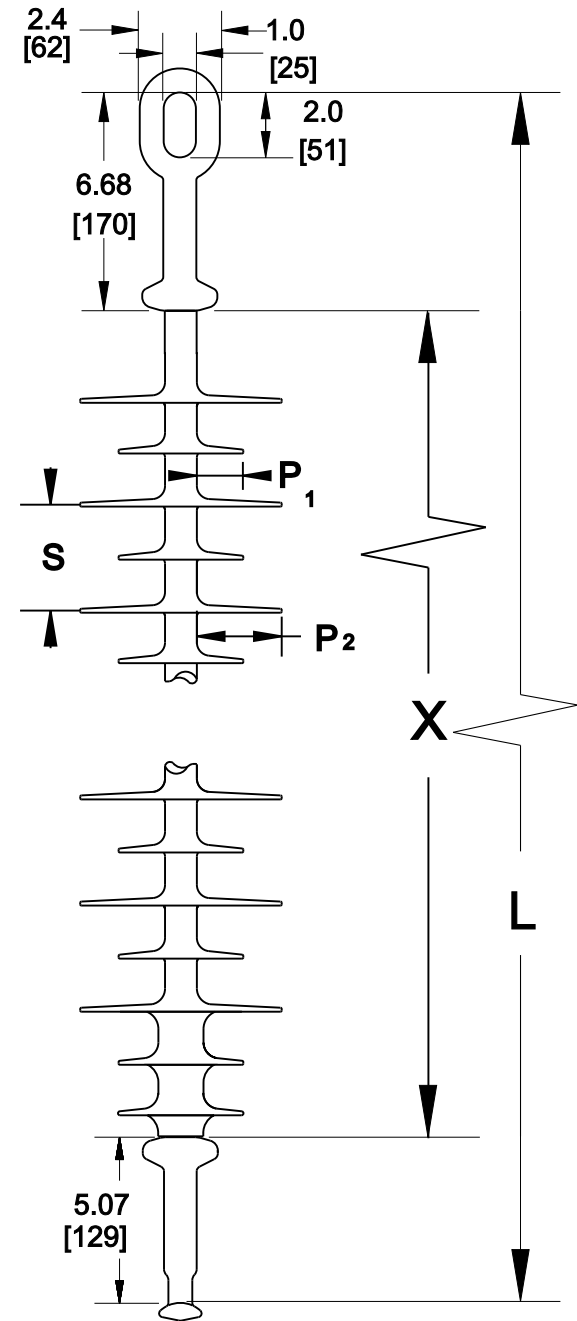
MECHANICAL VALUES

Specified Mech. Load (SML):

25,000 lbs 111.2 kN

Routine Test Load (RTL):

12,500 lbs 55.6 kN



Dimensions: inches [millimeters]

Note: Drawing not actual depiction of insulator appearance

Silicone Rubber Sheath & Sheds
Complies with applicable ANSI and IEC standards.